

Hand-held remote control (for Marex systems)

Engine emergency stop

**Twin-engine speed setting
and gear shifting**

Anchor winch
(or similar)

Bow thruster

Stern thruster

LED indication:

Alarm

(Port or starboard engine)

LED indication:

Control active

(Port or starboard engine)

Command transfer

Trolling ON/OFF

LED indication:

Feedback signal

(Trolling ON)

Safety switch

(idle speed/gears in neutral)



Technical data

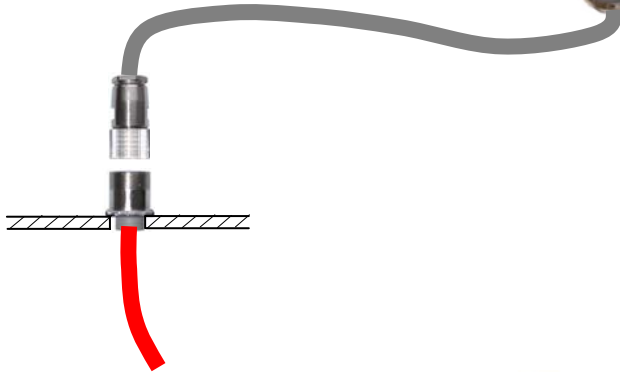
- Supply voltage 8-32 V DC
- Up to 30 m cable length between hand-held control and electronic I/O node
- Up to 80 m cable length between I/O node and Marex

Hand-held remote control

- Protection type IP66
- 10 m connecting cable with plug
- CAN bus technology



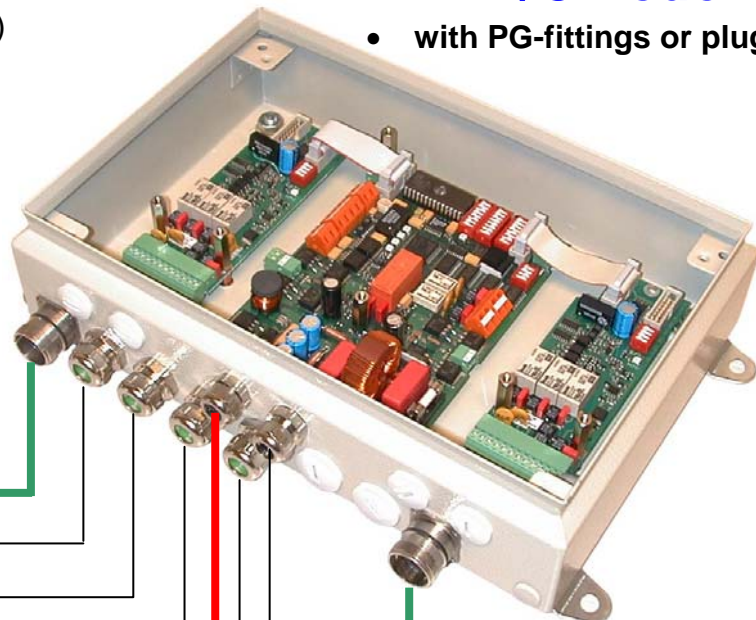
Connecting cable (10 m)
with plug



Connecting cable (20 m)
with plug

I/O node

- with PG-fittings or plugs



Marex port
Bow thruster
Stern thruster
Anchor winch
Hand-held remote control
Power supply
Engine stop
Marex starboard

Cable to Marex
10-80 m length